

FREDERICK DOUGLASS HIGH SCHOOL

Chamber Orchestra

Kentucky Music Educators Association
2021 Conference Virtual Performance



February 15 • 6:35pm
www.fdhsorchdestra.com

Introduction

Due to COVID-19, schools around the World have been forced to change how we educate our students. Fayette County public schools chose to go Virtual in March 2020, and have remained 100% virtual since that time.

To create our performance video, I decided to think outside of the box and utilize the tools and resources that were easily accessible to all students.

Lessons were created and offered in Canvas and over Zoom. Music was chosen from available literature on SmartMusic. All audio for our performance has been recorded on student owned devices in SmartMusic and assembled in Garage Band to create our virtual ensemble. We have chosen to present the recordings as submitted by the students with limited editing to showcase the reality of music education in a pandemic utilizing the resources available to students that have been 100% virtual. All images and video was recorded on student owned devices in Canvas and assembled in iMovie.

For our performance, we have created a virtual program set to music. Music chosen was the pop song “See you Again” by Wiz Khalifa, as someday, we all hope to see each other again in person to create music together.

This performance is a culmination of student dedication, time and perseverance. We are proud to present in KMEA conference performance the FDHS Virtual Chamber Orchestra.



Selections

Boreas

The Cold, North Wind

Todd Parrish

Kentucky Jam

Shirl Jae Atwell

Las Palmas

Bob Lipton

North Star to Freedom

In Honor of the Underground Railroad

Soon Hee Newbold



Performers

1st Violins:

Madeline Samuelson, Concert Master

Alexis Lewis

Sebastien Altamirano-Verni

Colin Martin

2nd Violins:

Logan Smith, Section Leader

Olivia Johnson

Julianne Fisher

Brett Pakizer

Lovelyn Cotton Fields

Qamber Hamza

Katie Greene

Violas:

Navin Tantasook, Section Leader

Alexandria Troth

Annika Maxey

Riley Hooks

Alessandro Altamirano

Kylie Profitt

Cellos:

Ethan Tantasook, Section Leader

Carley Craig

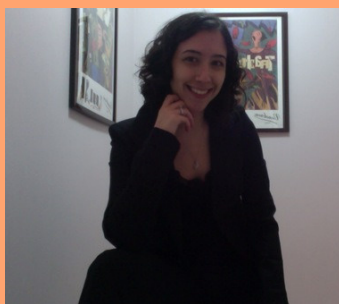
Andrew Lewis

Lawson Hill

Bass:

Emma Anderson





Mrs. Payne
Frederick Douglass High School
Carter G Woodson Academy

Mrs. Payne received her Masters of Music degree (Conducting) and Gifted and Talented Certification from Eastern Kentucky University and is a Graduate of the College of Creative Arts at West Virginia University, where she earned her Bachelor of Music Education Degree.

Prior to moving to Lexington, Mrs. Payne was the Director of Orchestras at Lawrence Central High School in Indianapolis, IN from 2006-2010. There she conducted three string ensembles and the LC Symphony Orchestra, all of which received consistent Gold Ratings at the ISSMA Festivals. During her time as Director, the Symphony Orchestra received Distinguished Ratings at the ISSMA State Qualifications, and competed at the ISSMA State Finals. The Symphony was also host to the 2009 American Pianist Association Classical Fellows Finalist, Igor Lovchinsky. Mrs. Payne's duties also included teaching the 5th grade beginning strings at two elementary schools and one beginning piano class at LC. During the summer, Mrs. Payne worked as a teacher at the Performing Arts Institute, teaching beginning, intermediate and advanced string students grades 4-12.

Mrs. Payne is currently an active member of the KY Chapter of American String Teachers Association and KMEA, having served as the State Orchestra Chair and Chair-Elect in 2015-2019, and serving as the District 7 orchestra chair in 2012-2014. Mrs. Payne was awarded the KMEA District 7 "Middle School Music Teacher of the Year" Award in 2013, and was also a semi-finalist for the first-ever Grammy Music Educator Award in 2013 and a quarter-finalist in 2014, 2015 and 2019. Mrs. Payne received the KY ASTA "Outstanding K-12 Director" Award in 2019. Mrs. Payne was a guest conductor for the WKU Honors Orchestra and Jefferson County MS Honors Orchestra in 2013 and 2016. Mrs. Payne was the Kentucky representative for the December 2014 issue of School Band and Orchestra Magazine "50 Directors Who Make a Difference." She has performed with the Lexington Community Orchestra, KY Bach Choir and L.O.V.E. (Lexington's Original Viola Ensemble). During the summer, she works at the Stephen Collins Foster Summer Music Camps as the Viola instructor, assistant conductor, and conductor.

Mrs. Payne began teaching in Fayette County in 2011 at Bryan Station Middle School. During her 8 years at BSMS, the orchestras received consecutive Distinguished Ratings at KMEA assessment, performed at the KMEA Conference in Louisville in 2013 and 2019, and received various other recognition and awards.

Speicial Recognitions

Thank you to the following individuals for your continual support of the FDHS Orchestra and music programs.

Lester Diaz, Frederick Douglass Principal

Alan Mayes, Frederick Douglass Associate Principal

Matthew Skaggs, Frederick Douglass Band

Amanda Herceg, Frederick Douglass Band

Kelly Diamond, Carter G Woodson Academy Band

Annette DiToma, Crawford Middle Orchestra

Sara Francis, Edythe J Hayes Orchestra

Laura Summers, Edythe J Hayes Orchestra

Wendy Yates, Lexington Traditional School Magnet Orchestra

Nathan Wilson, Leestown Middle School Orchestra

Lori Bowen, FCPS Instrumental Music Department

Bob Elliott, FCPS Instrumental Music Department

A very special thank you to Michael Payne (BSHS Band) for spending numerous hours editing audio in Garage Band for this performance.

Thank you FDHS Orchestra students and parents for your hard work and dedication to our ensemble.



